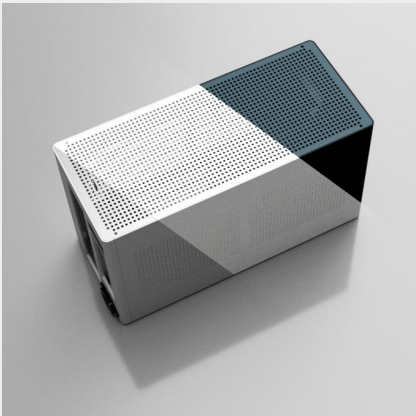
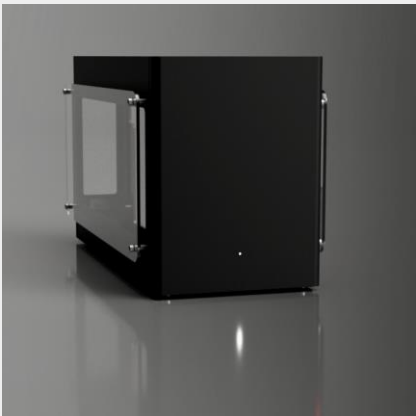


Optional add-ons



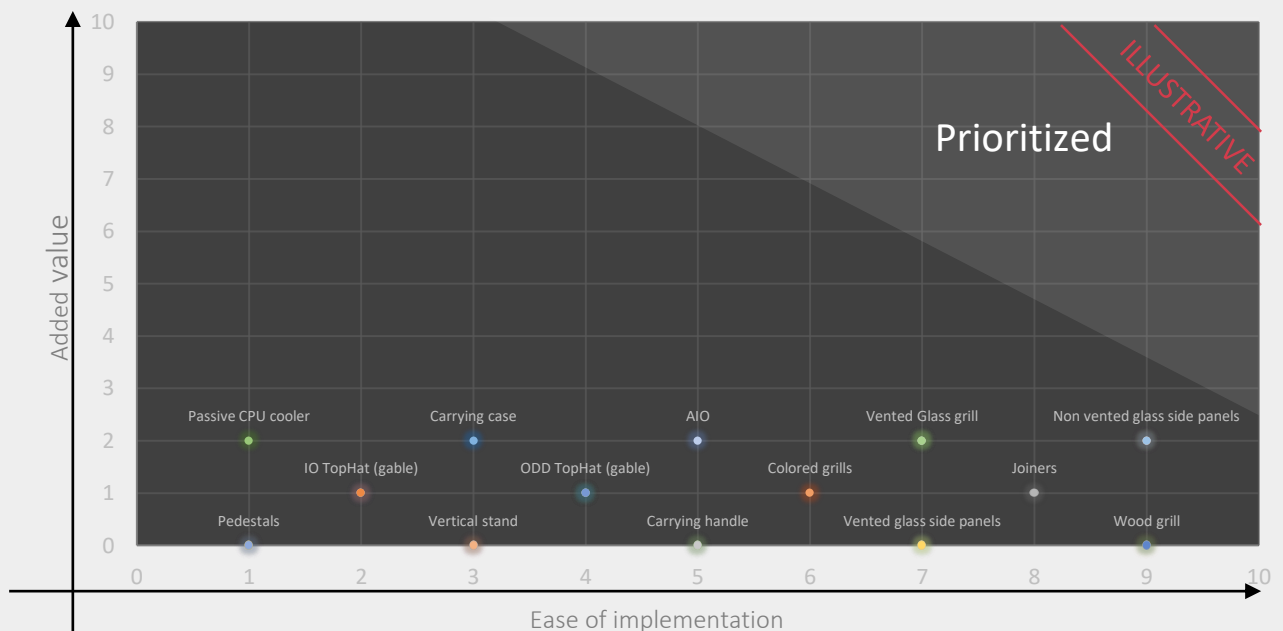
Optional add-ons

Introduction

All the add-ons listed in this document are short-listed accessories that will be developed for the Ghost S1 platform over time. They are presented here in more detail, this document should work as a communication tool to easier understand what the purpose of the different add-on projects are, how all they fit together and provide a quick visualization of each projects value addition to the Ghost S1 platform.

This is a living document that will continue to grow and that will be regularly updated with the status of each project. All illustrations in this documents are quick renders with the purpose of illustrating the application of each add-on, they should **not** be interpreted as a actual designs of them. The community and the design team will work in close cooperation in order to refine the design and features of each add-on.

#	Value added (1-10)	Ease of implementation (1-10)	Addons	Affected component	Short description
1	0	1	Pedestals	TopHat	TopHat with side cutouts to elevate the case and can house LP bottom fans
2	0	3	Vertical stand	Standalone	Stand solution that makes it possible to place the Ghost vertically on it's back for a small footprint
3	0	5	Carrying handle	Standalone	Carrying handle mounted on top
4	0	7	Vented glass side panels	Side panels	Side panels with tempered glass on stand-offs to create ventilation passage
5	2	9	Non vented glass side panels	Side panels	Side panels with tempered glass
6	2	7	Vented Glass grill	Grill	Replacement for the grill, tempered glass solution
7	0	9	Wood grill	Grill	Grill made out of sandwich wood construction
8	1	2	IO TopHat (gable)	TopHat	TopHat with integrated HDMI and USBs in the front/back
9	1	4	ODD TopHat (gable)	TopHat	TopHat with integrated ODD slot for slime drives
10	1	6	Colored grills	Grill	Multiple optional grill color options
11	1	8	Joiners	TopHat	TopHat that joins two Ghosts together with ventilated sides
12	2	3	Carrying case	Standalone	A carrying case with compartments matching a Ghost and peripherals
13	2	1	Passive CPU cooler	TopHat	A massive heatsink with heat pipes reaching the CPU from the TopHat, for passive cooling
14	2	5	AIO	Standalone	A closed loop AIO CPU (and GPU) cooler optimized for Ghost S1



Optional add-ons

Project name

Pedestals

Short description

TopHat with side cutouts to elevate the case and can house LP bottom fans

Affected component

TopHat



1

Project name

Vertical stand

Short description

Stand solution that allows to place the Ghost vertically on it's back for a small footprint

Affected component

-



2

Project name

Carrying handle

Short description

Carrying handle mounted on top

Affected component

-



3



Optional add-ons

Project name

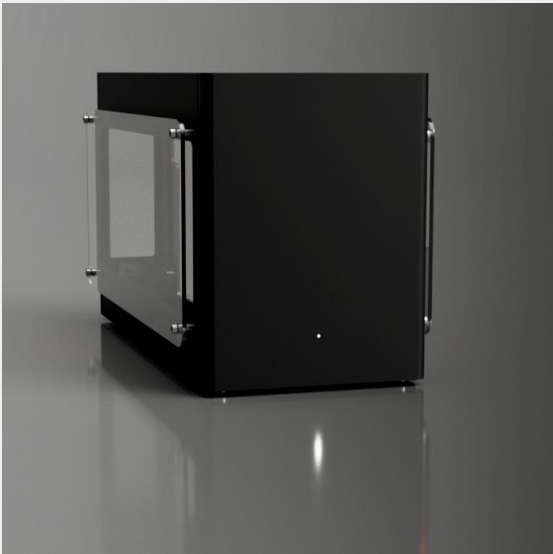
Vented glass side panels

Short description

Side panels with tempered glass on stand-offs to create ventilation passage

Affected component

Side panel



4

Project name

Non vented glass side panels

Short description

Side panels with tempered glass

Affected component

Side panel



5

Project name

Vented Glass grill

Short description

Replacement for the grill, tempered glass solution

Affected component

Grill



6



Optional add-ons

Project name

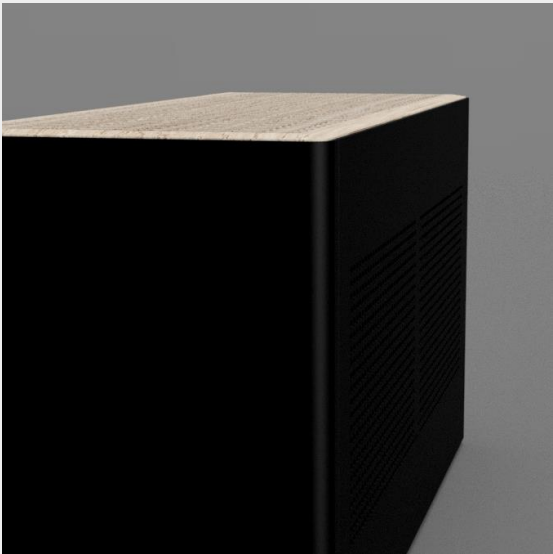
Wood grill

Short description

Grill made out of sandwich wood construction

Affected component

Grill



7

Project name

IO TopHat (gable)

Short description

TopHat with integrated HDMI and USBs in the front/back

Affected component

TopHat



8

Project name

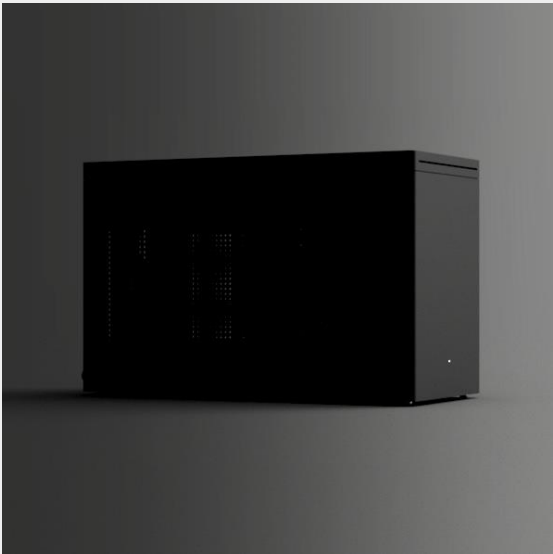
ODD TopHat (gable)

Short description

TopHat with integrated ODD slot for slime drives

Affected component

TopHat



9



Optional add-ons

Project name

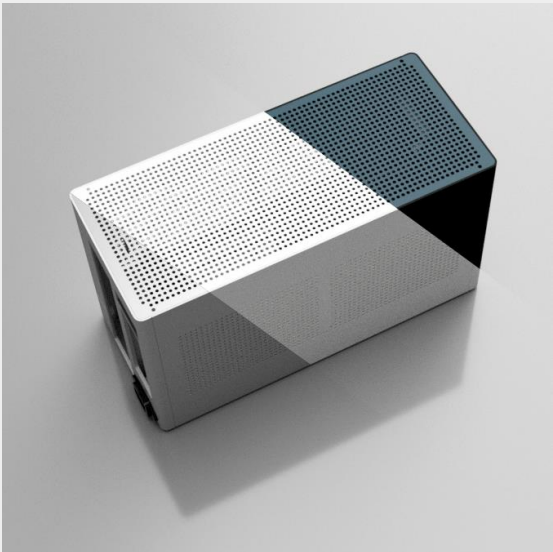
Colored grills

Short description

Multiple optional grill color options

Affected component

Grill



#10

Project name

Joiners

Short description

TopHat that joins two Ghosts together with ventilated sides

Affected component

TopHat



#11

Project name

Carrying case

Short description

A carrying case with compartments matching a Ghost and peripherals

Affected component

-



#12



Optional add-ons

Project name

Passive CPU cooler

Short description

A massive heatsink with heat pipes reaching the CPU from the TopHat, for passive cooling

Affected component

-



#13

Project name

AIO

Short description

A closed loop AIO CPU (and GPU) cooler optimized for Ghost S1

Affected component

-



#14

Project name

Protective sleeve

Short description

A protective sleeve for protecting the Ghost during transportation

Affected component

-



#15

